



# ANNUAL REPORT 2018

# Table of Contents

---

Ntataise - 38 years leading early childhood development .....	3
Trustees .....	4
Ntataise Staff 2018 .....	4
Donor Support .....	5
Financial Report .....	6
Ntataise Programmes .....	7
2018 Ntataise Network .....	8
ECD organisations which form the Ntataise Network .....	9
Directors' Report .....	10
Ntataise 2018 Programmes .....	12
Ntataise Network Support Programme .....	12
Ntataise Network Annual Conference .....	13
Ntataise ECD Centres of Excellence Hub Programme.....	14
Ntataise Accredited Training Programme .....	15
Ntataise Community Outreach Programme .....	15



## Ntataise - 38 years leading early childhood development

---

Ntataise meaning “to lead a young child by the hand” is an independent, not-for-profit organisation founded in South Africa in 1980 with the objective of helping women in disadvantaged, rural communities gain the knowledge and skills needed to establish and sustain effective Early Childhood Development (ECD) programmes for children in their care. The challenge in those early days was not only the lack of any ECD programme for young children growing up in rural farming communities, but the absence of any trained black early childhood teachers. With professional assistance, Ntataise pioneered the provision of early learning on farms both through the establishment of pre-schools and the training of teachers.

Ntataise began supporting similar organisations across the country providing training, capacity building and information on the most recent developments within the sector. Over the years Ntataise’s work has developed to meet the needs of the communities with which it works. Its reach has expanded from farm worker communities to towns and villages across the country. This has been achieved through the growth and support of the Ntataise Network which today has developed into one of the largest and most successful Networks in the South African ECD sector.

### Our continued vision

Thirty eight years on and Ntataise’s vision continues to be to ensure that growing numbers of children living in disadvantaged communities of South Africa gain access to quality early childhood development opportunities that support their physical, emotional and cognitive growth. To achieve this, Ntataise focuses on supporting the development of leaders, specifically women within the sector, both at grassroots level in community-based programmes and in the training organisations which support these women working directly with young children.



*“If you want to go fast, go alone.  
If you want to go far, go together”*

*-African Proverb*



## Trustees



*Simon Mokalodise*  
Chairperson



*David McCall*  
Treasurer



*The Queen Mother*  
*Dr Semane B Molotlegi*



*Maggie Nkwe*



*Jane Evans*



*Johannes Machatola*



*David Evans*

## Ntataise Staff 2018



*Puleng Motsoeneng*  
Director



*Sarah McGuigan*  
Director



*Rachel Leshoro*  
Programme  
co-ordinator



*Alice Chomane*  
Facilitator, assessor and  
moderator



*Sandra Mokwena*  
Facilitator and assessor



*Mantoa Mokhothu*  
Facilitator and assessor



*Moleboheng Leburu*  
Facilitator, assessor and  
moderator



*Ellen Mokitlane*  
Outreach Programme  
facilitator



*Melita Kakudi*  
Outreach Programme  
facilitator



*Tseleng Mkhwanazi*  
Assistant Outreach  
Programme facilitator



*Simone Rawlings*  
Fundraising and HR



*Kaley Le Mottee*  
Monitoring, evaluation  
and project manager



*Palesa Tsuela*  
Data capturer



*Mpho Motsoeneng*  
Administrator



*Carla Prinsloo*  
Administrator



*Sam Modiakgotla*  
Driver



*Emmah Guza*  
Housekeeping



*Margaret Sothoane*  
Housekeeping



## Donor Support

Ntataise thanks its donors most sincerely for their continued support, interest and belief in Ntataise and its work. Their support has assisted Ntataise to innovate and develop solutions to continue delivering quality programmes which capacitate ECD practitioners, trainers, facilitators and project leaders with the necessary skills and tools needed to scale up the provision of quality ECD to the most marginalized communities of South Africa.

### In 2018 donations were received from:

Anglo American Chairman's Fund

Deutsche Bank South Africa Foundation

Donaldson Trust

Edward Nathan Sonnenbergs Inc.

FirstRand Trust First National Bank Fund

HCI Foundation

HO Taylor Will Trust

Iqraa Trust South Africa

Letsatsi Power Project

Lewis Stores

Melville Inglis Family Charitable Trust

National Department of Social Development

Nedbank Foundation

New Settlers Foundation

Sisi and Savita Charitable Trust

The Annie Lennox Foundation

The Federated Employers' Mutual Assurance Company (RF) (Pty) Ltd

The Grain Care Trust

The Haggie Charitable Trust

The Jim Joel Fund

The Oppenheimer Memorial Trust

The Robert Niven Trust

#### Donations from Individuals:

Antoinette & Basil Hersov

Gift in memory of Jean Holden "and her love for South Africa"

Julian & Tessa Ogilvie Thompson

### Donations in Kind:

DigiDynamic

Indigo Cosmetics

Mark Klein Productions

National Brands Ltd.

Outovariva Motors

Rhys Evans Group (Pty) Ltd

Volkswagen Group South Africa



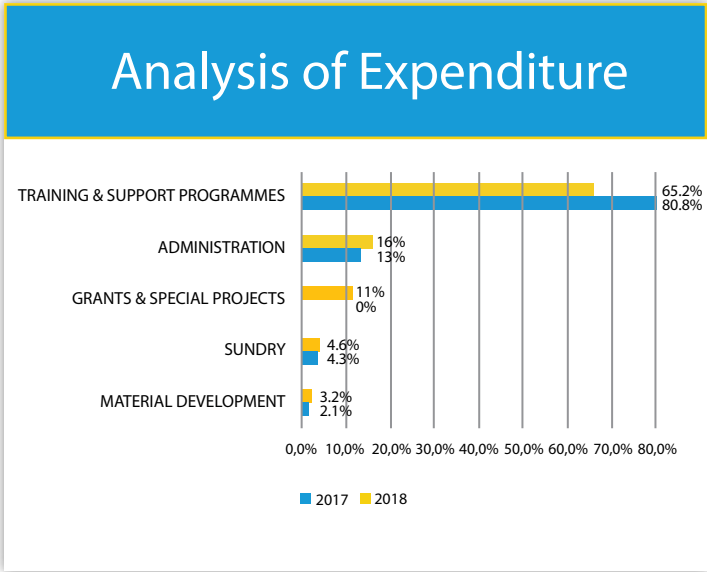
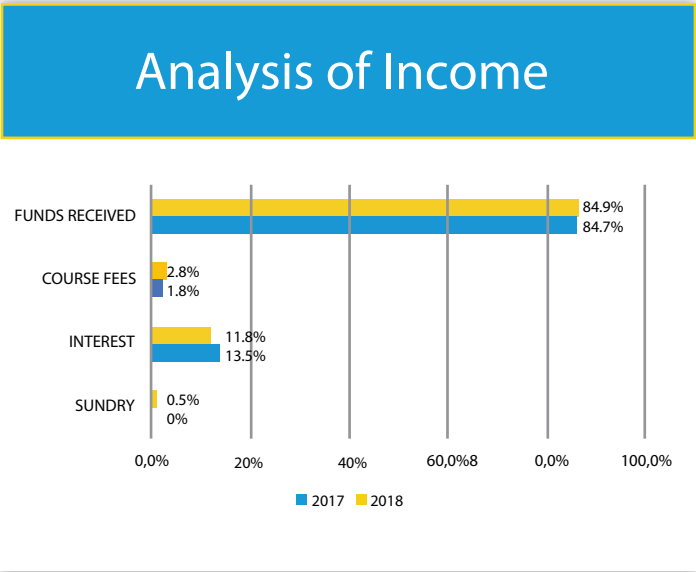
*Thanks to Volkswagen Group South Africa for the donation of a Volkswagen Polo to Ntataise*

# Financial Report

In 2018, total expenditure on Ntataise core operations, excluding special projects, grew by 6% and total income by 13.9%. Total expenditure on training and support functions however decreased by 24%, and amounted to 65.2% of total expenditure. This due to the commencement of new special projects in 2018 which amounted to 11% of total expenditure and 14.8% of total income. Special projects are undertaken to meet identified needs within a defined period and are implemented in partnership with other organisations, donors or government.

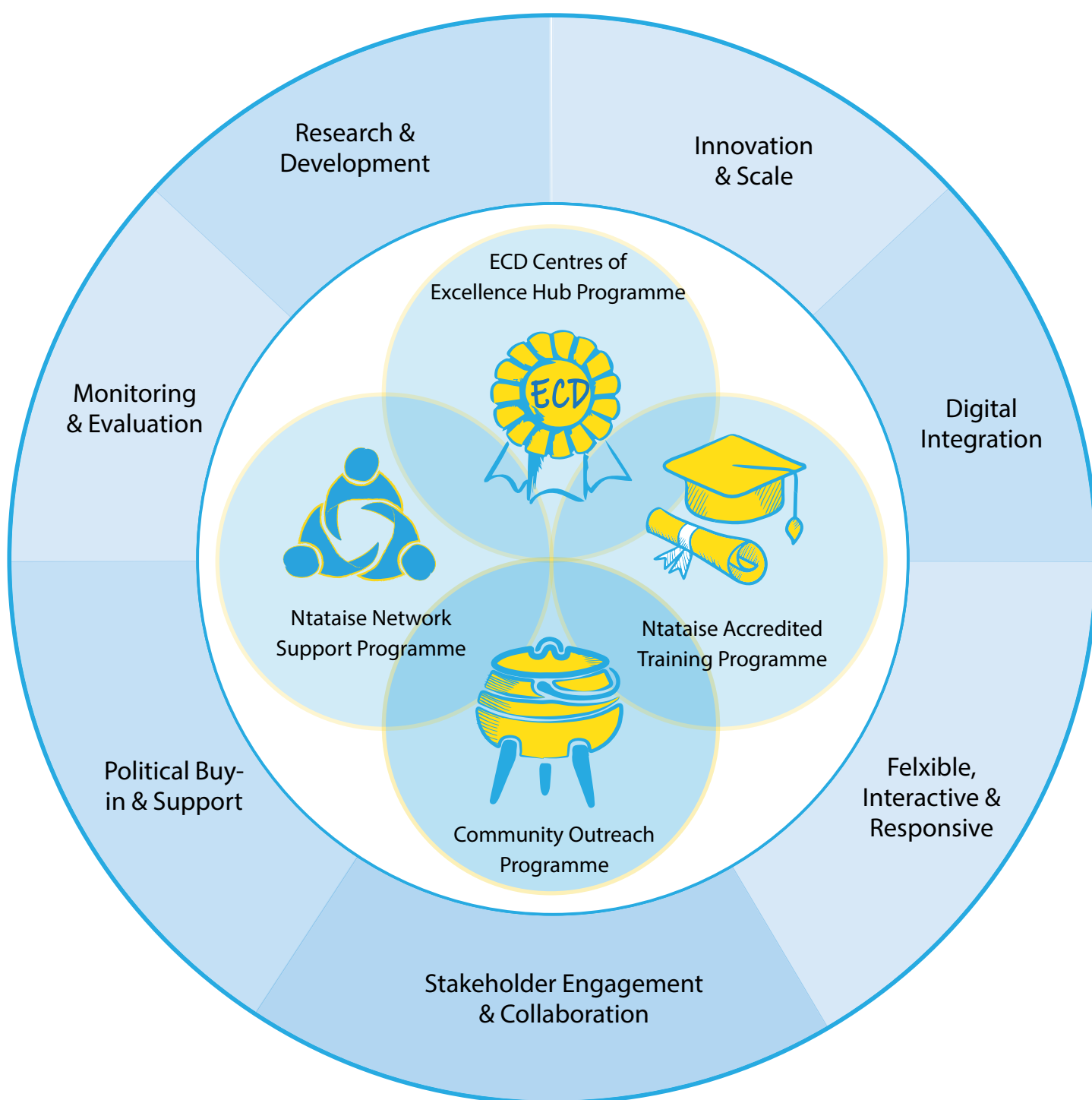
Administration expenses increased to 16% of total expenditure, compared with 13% the previous year, attributable to increased fundraising and marketing costs. The growth in income was attributable to a 73.3% increase in affiliation and course fees received compared with 2017. Funds received grew by 14.2% due to special projects, and there was a small amount of 0.5% of total income raised from the sale of assets.

In summary, Ntataise’s financial position remains sound, and expenses are well controlled. While expenditure on special projects shows variations from year to year, core operations continue to be well supported by funders.



# Ntataise Programmes

*Ntataise's quality ECD programmes are implemented by 20 independent Ntataise Network member organisations working in 7 of South Africa's 9 provinces.*



*Overarching vision – Ntataise aims to increase access to quality ECD opportunities for children living in disadvantaged communities in South Africa.*

## 2018 Ntataise Network

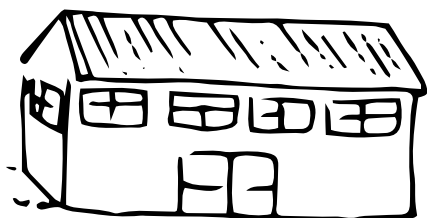


20

Ntataise Network member organisations operating in 7 provinces of South Africa

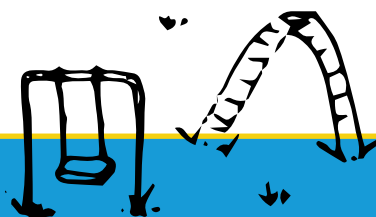
4635

ECD Practitioners trained and mentored



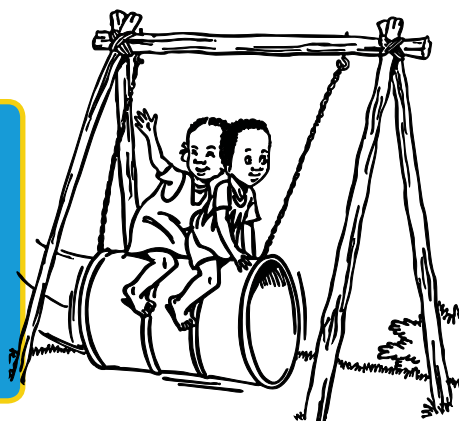
2937

Community & home-based ECD centres and playgroups



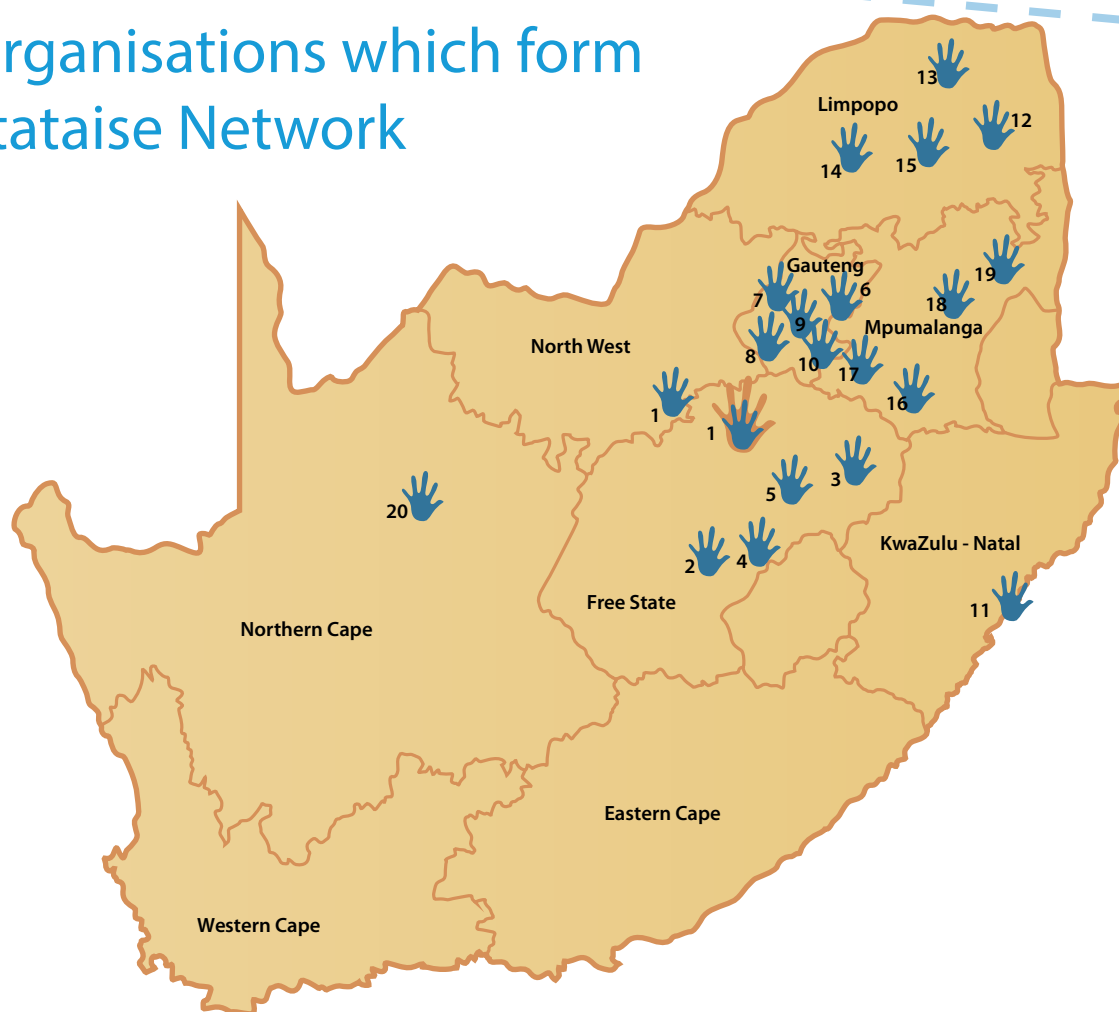
136 688

Children reached in 2018





# ECD organisations which form the Ntataise Network



## Free State

### 1. Ntataise

(Parys, Vredefort, Rammulotsi, Bothaville, Welkom, Steynsrus, Kroonstad, Edenville and North West province)

### 2. Lesedi Educare Association

(Western, Central, Central-Eastern, South-Western, Southern, South-Eastern Free State, Sterkspruit, Aliwal North (Eastern Cape) and towns along the southern Free State/Eastern Cape Border)

### 3. Ntsoanatsatsi Educare Trust

(Maluti-a-Phofung Municipality which covers QwaQwa, Kestel and Harrismith)

### 4. Realeboga-Bakubung Training & Development Agency

(Thaba Nchu, Botshabelo, Ladybrand)

### 5. Tshelang Educare Trust

(Senekal, Rosendal, Fouriesburg, Ficksburg, Bethlehem, Reitz, Clarens, Petrus Steyn, Lindley, Paul Roux, Qwa-Qwa, Harrismith, Clocolan, Marquard and Warden)

## Gauteng

### 6. Baobab Early Learning Training Programme

(Soweto, Alexandra, Germiston and Central Johannesburg)

## 7. Education Africa

(Protea Glen and surrounds, Soweto)

### 8. Greater Soweto Association for Early Childhood Development

(Gauteng, Soweto and its informal settlements)

### 9. Katlehong Early Learning Resource Unit (KELRU)

(Kathorus area which includes Thokoza, Vosloorus, Daveyton, Tsakane, KwaThemba and Wattville)

### 10. Safe and Sound Learning Association

(Ekurhuleni and Johannesburg metros)

## Kwazulu Natal

### 11. Natal Early Learning Resource Unit (NELRU)

(Greater Ethekuni Municipality, Groutville, Mapumulo, Stanger, Darnall, Kokstad, Matatiele, and Lusikiki)

## Limpopo

### 12. Golang Kulani Early Learning Centre

(Mopani District in Greater Tzaneen, Maruleng and Letaba Municipalities)

### 13. Khamimamba Training & Resource Centre

(Mopani, Vhembe, Capricorn and Waterberg District Municipalities)

## 14. Thukakgaladi

(Mankweng area. Polokwane municipality, Capricorn district)

## 15. Thušanang Trust

(Capricorn, Mopani and Vhembe Districts of Limpopo)

## Mpumalanga

### 16. Masakane Trust

(Standerton, Greylingstad, Embalenhle, Bethal, Morgenzon, Perdekop, Amersfoort, Pietretief, Daggakraal, Ermelo)

### 17. Siyathuthuka Nursery School Project

(Eastern Highveld – Devon, Delmas, Balfour, Kriel, Cluwer, Leandra, Kinross and Embalenhle)

### 18. Sithuthukile Trust

(Middelburg, Emalahleni, Hendrina, Ogies, Bronkhorstspuit, Kwamhlanga, Siyabuswa, Tjakastad and Roossenekal)

### 19. Ntataise Lowveld

(Nelspruit, Komatipoort, Kanyamazane)

## Northern Cape

### 20. Custoda Trust

(Ulco, Delpportshoop, Barkley West, De Aar, Kimberley)



# Directors' Report

---

**Puleng Motsoeneng and Sarah McGuigan, Directors Ntataise.**

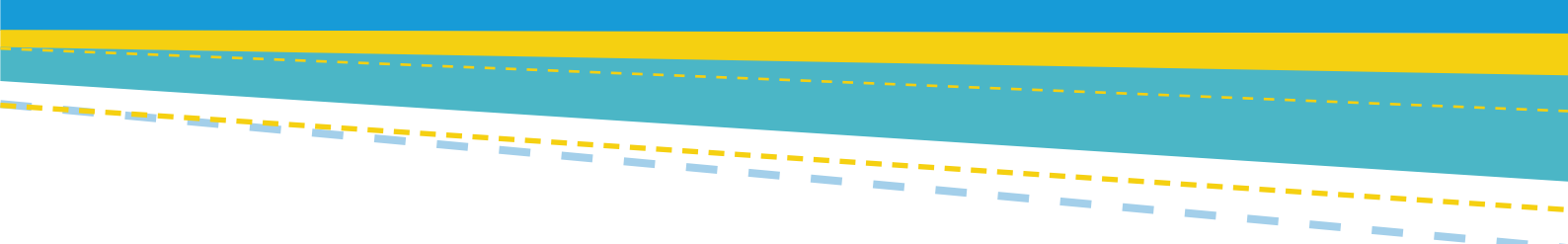
2018 saw the strengthening of the ECD sector through improved collaboration, sharing and partnerships amongst civil society and with government. Ntataise's 2018 programmes and projects exemplified how collaboration and a shared vision can achieve greater impact.

One such example is Ntataise's partnership with the National Department of Social Development which in 2017/18 funded the expansion of the Ntataise ECD Centres of Excellence Hub Programme across five provinces with eight Ntataise Network members and impacted 329 community and home-based ECD centres. With multi-year support confirmed by the Department, the programme will be further developed, improved and extended to an additional 160 ECD centres annually for the next three years. In addition to the collaborative delivery of the programme, the hub / cluster structure of the model enabled the development of communities of practice between ECD practitioners resulting in improved reflection, sharing and peer support. In November 2018, Ntataise received a Community Chest Impumelelo Social Innovations Award for the model. The awards acknowledge models of excellence which find innovative and sustainable solutions to local challenges.

At a national level, both the sector and the Ntataise Network worked closely towards the professionalisation of human resources within the sector, having recognised that the provision of quality ECD services relies on the availability of a committed, appropriately qualified and equipped cadre of ECD practitioners. Ntataise continued to participate as a member of the core consortium in the Project for Inclusive Early Childhood Care and Education (PIECCE); a multi-stakeholder collaboration with the objective to develop standardized Programme Frameworks for a diploma and BEd degree in Early Childhood Care and Education (ECCE). Ntataise's participation in PIECCE has drawn in the voices of a wider pool of ECD training organisations so as to safeguard the alignment of these new qualifications with the relevant needs of the majority of ECD practitioners working in community based programmes.

In keeping with a shared vision, Ntataise elicited the experience and expertise of the Ntataise Network to develop the Ntataise ECD Practitioner Occupational qualification at NQF Level 4, as the current vocational ECD unit standard based qualifications fall away in 2023. The collaborative nature of the project ensured that the knowledge and experience of the Ntataise Network was combined to develop a practical, theoretical, contextually appropriate and accessible training programme and support materials.

On the home front, Ntataise's Community Outreach Programme in the rural Free State township of Rammulotsi was another example of how to achieve so much more by working together. In partnership with the PAX and Ango-Maseola day clinics, Ntataise Outreach facilitators set up a playgroup in the waiting area of both clinics reaching 235 young children birth to 6 years, and provided psycho-social support to 187 vulnerable parents and caregivers, and in particular new young mothers, to provide, as best they can, for their babies' and children's needs. The Ntataise facilitator's daily presence at the clinics has created a safe space for caregivers to openly engage and share challenges, discuss health issues, be referred to support services, including referral to community ECD centres and playgroups in Rammulotsi, all whilst providing a safe place for their children to play and learn.



As Ntataise looks forward, a key focus, in addition to collaboration, is innovation, data and digital integration to help accelerate solutions to empower ECD trainers and practitioners and expand access to quality ECD provision in marginalised communities. In 2018, through the Digital Literacy for All project, Ntataise provided opportunities to Ntataise Network members to become comfortable interacting and working in the digital knowledge space. In 2019, Ntataise plans to build on the gains made by introducing digital platforms to the Network in order to promote improved sharing, showcase working practice, professional development, data capture and quality ECD implementation amongst ECD practitioners, trainers and other key stakeholders.

With the significant shifts taking place within the national ECD landscape, collaboration of the sector has never been more important. Ntataise and its Network have many lessons to share. As a sector, we need to learn from each other's successes and challenges to ensure that we find innovative ways of working together to build a strong and integrated ECD system so that every young child has access to quality ECD programmes.

In conclusion, 2018 was another successful year for Ntataise and the Ntataise Network as we continued to collaboratively implement our programmes with the shared vision of extending access to quality ECD to young vulnerable children living in some of South Africa's most disadvantaged areas.

Special thanks go to the Ntataise staff, Board of Trustees, Donors and partners for their continued support and input, all of whom play an important role in ensuring the effectiveness of our work.

## **Farewells and Welcome**

In February 2018, Ntataise bid farewell to Claire Gledhill, Ntataise Monitoring, Evaluation, Reporting and Fundraising Manager; Martha Moloke, Ntataise Facilitator and Assessor and Erika De Wet, Ntataise Financial Administrator in the Free State operations. Later in August we said farewell to Rachel Leshoro, Ntataise Programme Co-ordinator in the Free State operations.

We were pleased to welcome Carla Prinsloo and Kaley Le Mottee to the Ntataise team in May and July respectively in 2018. Carla joined Ntataise in the capacity of Administrator at Ntataise's Office and Training Centre in Rammulotsi, Viljoenskroon. Kaley Le Mottee was welcomed to the Ntataise team as Monitoring, Evaluation and Project Manager. Kaley's role includes project management as well as leading Ntataise's communications, knowledge management and monitoring, evaluation and reporting.

## **In memoriam**

It was with great sadness and heavy hearts that we mourned the passing of Mpho Motsoeneng in January 2019. Within the short time of a year, Mpho had become an integral and much-loved member of the Ntataise team. Mpho is deeply missed and our thoughts and prayers are with her family.

Our thoughts and condolences go to the family of Moses Nthenthe who passed away in 2018. Moses was a long-time friend and regular driver for Ntataise and contributed to Ntataise's operations in many ways.

Our sincere condolences also go to all those in Ntataise and the greater Ntataise community who lost family and loved ones during the past year



# Ntataise 2018 Programmes

## Ntataise Network Support Programme

The Ntataise Network is a collaboration of 20 leading ECD NGO Resource and Training Organisations and one of the strongest of its kind. Through this Network, Ntataise programmes are delivered at scale in collaborative and integrated ways.

Ntataise provides a support programme to the Network to assist members to work together to improve the quality of their operations and to adapt to the changing needs of the communities in which they work. In 2018 the Ntataise Network Support programme continued to focus on providing support, mentoring and capacity building to Network member organisations who all share the same purpose of strengthening the delivery of quality ECD in disadvantaged communities.

A key focus for the programme was capacity building around the use of digital platforms in an effort to extend access to quality ECD in more innovative and efficient ways. The intention being to build confidence and skills of Network member facilitators, mentors and staff, to incorporate a blended learning approach in training, for professional and personal development, and to gather data for ongoing monitoring, evaluation and learning across the Network. In order to equip Network members with the basics, Ntataise held a number of computer and digital literacy fundamental sessions with Network members over the year.

## Components of Ntataise Network Support Programme:

- Training of trainers in the use of Ntataise programmes
- Mentoring and coaching
- Capacity building and organisational development
- Quality assurance
- Collective voice - keeping abreast of national developments

Being part of the Ntataise Network has benefited us at Realeboga-Bakubung in numerous ways. Many doors have opened both for personal development and organisational funding. When we have any issues, Ntataise is always available to assist. Our trainers, facilitators and administrators have attended and benefited from training sessions organised by Ntataise. We have also been kept up to date in the ever-growing digital world.

**Alice Phirime, Realeboga-Bakubung Training & Development Agency**

Thusanang has been involved with Ntataise since it started working with rural pre-schools in Limpopo in 1987. Since then our ECD work has grown and spread. Ntataise has kept us up to date with sectoral trends and provided the organisation with support, training and materials.

**Terry Morgan, Thusanang Trust**



## Ntataise Network Annual Conference

The Ntataise Network Annual Conference provides the opportunity for networking, sharing, peer-learning and collaboration between Ntataise Network members, funders and other key ECD stakeholders. The conference promotes improved cohesion within the ECD sector and ensures that all network member organisations work within the country's broader ECD context. The 38th Ntataise Network Conference took place on 20th to 22nd August 2018 and involved some 120 Ntataise Network members and guests.



*Ntataise Network members in their colourful, traditional attire*



*Marie-Louise Samuels from the Department of Basic Education presenting on the ELDAs*

The conference comprised a series of presentations, discussions and interactive activities covering ECD topics ranging from policy and research updates to more practice-focused sessions with a focus on digital integration. A highlight was the launch of the revised Ntataise ECD Themed Activity Toolkit which has been aligned to the National Curriculum Framework for Children Birth to Four. The toolkit is designed to spark creativity in ECD practitioners by providing theme-based play activities to enrich the daily programme for the children in community and home-based ECD centres and playgroups. This new edition also incorporates activities for the younger age groups of babies and toddlers, as well as how to adapt play activities for children with special needs and learning barriers.



*Ntataise Network members and guests on the last day of the conference*



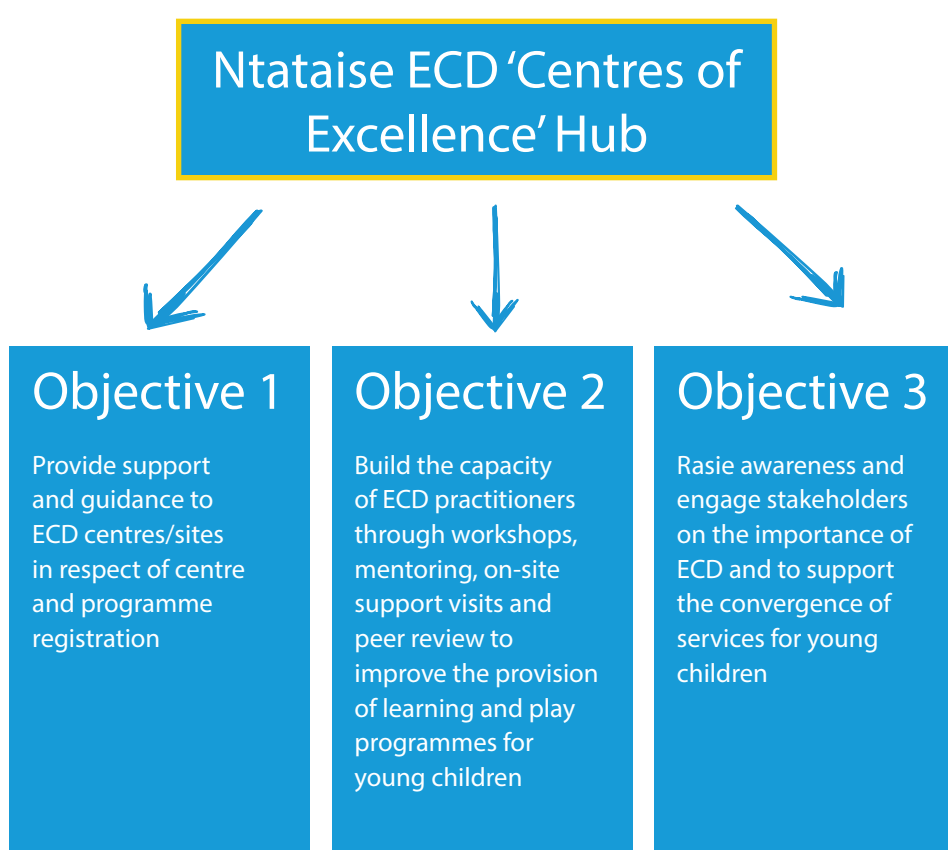
## Ntataise ECD Centres of Excellence Hub Programme

The Ntataise ECD Centres of Excellence Hub Programme integrates Ntataise programmes which have been adapted and refined over time, to provide a holistic package which promotes partial care and programme registration, develops the capacity of ECD practitioners, engages the broader community and creates a system of support for survivalist community and home-based ECD facilities to transform into ECD Centres of Excellence.

Key to the programme is the Hub/cluster model which provides opportunities for the empowerment of practitioners through the formation of communities of practice where practitioners observe each other's playrooms / playgroups in action, helping to establish processes for peer-learning and support, self-reflection and continuous learning in non-judgmental and collaborative ways. These communities of practice have proven to be self-sustaining, have increased practitioner confidence, and have created common purpose so as to address critical needs, encourage and support collaboration and enable the convergence of good quality services for young children.

In 2018, the programme was implemented by Ntataise and eight Ntataise Network members in Mpumalanga, Gauteng, Limpopo, North West and Free State provinces. With the support of the National Department of Social Development, the programme reached 329 ECD community and home-based ECD centres and playgroups, supported 740 ECD practitioners and impacted 22 260 vulnerable young children in disadvantaged communities.

### Ntataise ECD 'Centres of Excellence' Hub Model





## Ntataise Accredited Training Programme

The Ntataise Accredited Training Programme provides practitioners with the skills and knowledge they require to run an ECD programme be it a centre, home-based facility or playgroup. Ntataise's strategy is one of in-situ training coupled with continuous on-site support including regular mentoring, which has been pivotal in improving and upgrading the practical implementation and sustainability of quality ECD programmes.

In 2018, 119 ECD practitioners were enrolled on the Ntataise FETC:ECD Level 4 qualification programme from disadvantaged communities in the Free State and North West provinces. These practitioners work directly with approximately 2 583 young children in their playrooms and a further 7 118 children who attend the ECD community or home-based centres in which the practitioners work. Of significance in 2018, was the greater number of youth participating in the training, with 59% of the learners under the age of 35 years.



## Ntataise Community Outreach Programme

The Ntataise Community Outreach Programme provides non-centre based ECD services coupled with programmes / services which provide caregivers with opportunities to learn more about child developmental stages, early stimulation and child care. The objective of this programme is to increase access to play and learning opportunities for the most vulnerable young children not in a pre-school or home based ECD programme and assist their caregivers in providing for their children's basic needs. In 2018 the Ntataise Community Outreach Programme included four Mosupatsela "Come and Play" playgroups in the rural township of Rammulotsi; an ECD support programme at two local day clinics and a caregiver support programme.



Over the year these programmes worked with 538 young children and 579 parents/caregivers. In addition to an increased awareness of the importance of ECD in this community, the consistent and regular presence of the Outreach facilitators and their dedication to the caregivers and their children has created a relationship of trust with caregivers who are becoming increasingly more comfortable in seeking assistance from the Ntataise facilitators. This has resulted in the formation of support networks, with more caregivers and young children accessing psychosocial support and other specialised support services.





# NTATAISE

*To lead a young child by the hand*

## **Free State Office**

Stand No. 1616/17

Rammulotsi

Viljoenskroon, 9520

Tel: (+27) 56 343 0034

Fax: (+27) 56 343 0040

Email: [info@ntataise.co.za](mailto:info@ntataise.co.za)

## **Gauteng Office**

2 Campbell Street

Waverley

Johannesburg, 2090

Tel: (+27) 11 025 7099

Email: [ecd@ntataise.org](mailto:ecd@ntataise.org)

**Web: [www.ntataise.org](http://www.ntataise.org)**

PO Box 41, Viljoenskroon, 9520

